

## SOIL SEPARATOR

24" x 300' 0218224300 24300SSF



## NON-WOVEN FABRIC

7.5' x 300' 42000915 FF4075360  
 12.5' x 360' 42000920 40-125-360  
 15' x 300' 42000925 40-150-300  
 12.5' x 360' 42001470 140N12.5X360  
 15' x 360' 42001475 140N15X360



## JUTE MESH

4' x 225' JUTE MESH SOIL SAVER ROLL 42001550  
 6" 11 GA JUTE STAPLES - 100 PC 42001545

## BIO STRAW WATTLE & STRAW WATTLE

8" x 25' 811230 STRAW WATTLE  
 9" x 25' 811231 BIO STRAW WATTLE  
 9" x 25' 811231-P BIO STRAW WATTLE PLT 12



## WATTLE STAKES

1" x 1" x 18" WATTLE STAKE WSTAKE18  
 1" x 1" x 18" WATTLE STAKES - 50 PC WSTAKE18-C



## POLY BAG - FILLED

- 2000 HR RATED BAGS

1/4 CF - WHITE SAND FILLED 810044  
 1/2 CF - WHITE SAND FILLED 810048  
 1/2 CF - WHITE GRAVEL FILLED 810047



## EMPTY BAGS

- 2000 HR DOUBLE STITCHED FOR SAND  
 14" x 26" WHITE POLY BAG W/ TIE 810049
- 4000 HR + FOR GRAVEL  
 14" x 26" YELLOW NON WOVEN MONOFILAMENT  
 BAG WITH TIE 810045

\*Other colors available & 4000 HR available.

\*Other colors available.



## RAINSUITS/STEEL-TOE BOOTS

AVAILABLE:

RAINSUITS SIZE L TO 4XL

RAINBOOTS SIZE 7-13



## E-ZUP SHELTER BLUE LIGHTWEIGHT & PORTABLE

10' x 10' E-ZUP SHELTER BLUE 42000805 EZVS9104BL

12' x 12' E-ZUP SHELTER BLUE 42000810 EZVS2912BL



## POLYFILM

20' x 100' 4 MIL POLYFILM - CLEAR 851210C  
 20' x 100' 6 MIL POLYFILM - CLEAR 852210C  
 20' x 100' 10 MIL POLYFILM - CLEAR 853210C  
 20' x 100' 4 MIL POLYFILM - BLACK 851210B  
 20' x 100' 6 MIL POLYFILM - BLACK 852210B  
 20' x 100' 10 MIL POLYFILM - BLACK 853210B



## TARPS

10' x 20' TARP 9939300015 T1020BB90  
 12' x 16' TARP 9939351832 T1216BB70  
 16' x 20' TARP MED 9939300028 T1620BB90  
 18' x 24' TARP MED 9939300030 0709115  
 20' x 30' TARP 9939300033 T2030BB70  
 20' x 40' TARP 9939300034 767921





## 100' LED LIGHT STRING

45001440 08-00501

- Hanger hooks included, optional magnetic hook kit
- Lights have rugged protective grids



### M18 LED WORKLIGHT

42000590

2354-20 BARE TOOL

## HENRY PRODUCTS FOR WET/DRY APPLICATION



208 WET PATCH® ROOF LEAK REPAIR  
10.1 OZ TUBE 860118 / 860118-C  
.9 GAL 860120 / 860120-C  
3.3 GAL 860126  
4.75 GAL 860121

208R RUBBERIZED WET PATCH® ROOF LEAK REPAIR  
10.1 OZ TUBE 860140 / 860140-C  
.9 GAL 860142 / 860142-C  
3.3 GAL 860143  
107 SEALER & DAMPPROOFER  
.9 GAL 107 860105  
4.75 GAL 860106



## 60" JOBSITE CHEST

4341992499 CJB638990

- 12 Ga steel
- Bolt cutter-free locking system
- Heavy-duty staked and welded hinge
- 1" steel locking arm holds the lid open



## PROPANE HEATERS

DURA HEAT FORCED AIR HEATER GFA40 42001565  
SINGLE-HEAD PROPANE HEATER 8930142100 F242100  
DOUBLE-HEAD PROPANE HEATER F242650 8930142650



## 6 CF WHEELBARROW

42004542 670154

- Steel tub and handles
- Comfort grip



## ROUND OR SQUARE POINT SHOVELS

ROUND POINT SHOVEL 42001825 GTSHR-48  
SQUARE POINT SHOVEL 42001830 GTSHS-48  
• Hardwood handles



## PACKOUT™ MODULAR STORAGE SYSTEM



### PACKOUT™ LARGE TOOLBOX

4524250534 48-22-8425

- 50 Lb capacity



### PACKOUT™ ROLLING TOOLBOX

4524250535 48-22-8426

- 250 Lb capacity



### PACKOUT™ CRATE

42000615 48-22-8440

- 50 Lb capacity



## FUEL VACUUMS



### 9 GAL M18™ FUEL VAC

47006025 0910-20



### 9 GAL M18™ FUEL VAC

47006040 0940-20

- .25 Gal canister capacity



### M18™ FUEL BACKPACK VAC

47006020 0885-20

- 1 Gal canister capacity

# MORE THAN JUST GREAT LUMBER™

## DISPOSAL EQUIPMENT

20 CT 42 GAL CONTRACTOR BAG HK42WC020B 7396322042  
 STEEL DUST PAN 2002701310 40736  
 POLY DUST PAN LRG W/HNDL 7179800495 8497



## PUSHBROOMS

24" PUSH BROOMS W/BRACE  
 636 7179800636  
 638 7112909424  
 278AOR 1892871190  
 857SUS 7179820857  
 869HDSU 7179820869



## MAXXAIR CONFINED SPACE 12" VENTILATOR & HOSE

45000310 HVHF 12 COMBO 7396322042

- 2000 CFM
- 2-Speed Control
- Intake or Exhaust



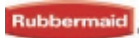
## SQUEEGEE

24" FLOOR SQUEEGEE - CURVED ETTORE 42007515 4624  
 36" FLOOR SQUEEGEE - CURVED ETTORE 42007520 4636



## RUBBERMAID MAINTENANCE SUPPLIES

55 GAL BRUTE TRASH CAN 43000235 FG265500GRAY  
 LID FOR 55 GAL BRUTE TRASH CAN 43000240 FG265400GRAY  
 BRUTE CADDY BAG CONTAINER 43000245 FG264200YEL  
 BRUTE TRASH CAN DOLLY 43000255 FG264020BLA  
 LID FOR 10G BRUTE TRASH CAN 8687601238 FG260900GRAY  
 10 GAL BRUTE TRASH CAN 8687601247 FG261000GRAY  
 20 GAL BRUTE TRASH CAN 8687601343 FG262000GRAY  
 44 GAL BRUTE TRASH CAN GRY 8687601463 FG264360GRAY  
 32 GAL BRUTE TRASH CAN 8687601467 FG263200GRAY



## ELASTOMERIC JOINT SEALANTS

SIKAFLEX -1A ELASTOMERIC JOINT SEALANT / ADHESIVE  
 WHITE 10.1 OZ CARTRIDGE 338600275 91017 / 338860027C  
 CAPITOL TAN 10.1 OZ CARTRIDGE 43002150 91012 / 43002155  
 BLACK 10.1 OZ CARTRIDGE 3388600279 91011 / 3388600031  
 DARK BRONZE 10.1 OZ CARTRIDGE 43002170 91014 / 43002175  
 ALUMINUM GRAY 10.1 OZ CARTRIDGE 43002140 91009  
 LIMESTONE 10.1 OZ CARTRIDGE 43002160 91016 / 43002165  
 LIMESTONE 20 OZ SAUSAGE 32400360 91007



PREMIUM-GRADE, HIGH-PERFORMANCE, MOISTURE-CURED, 1 COMPONENT, POLYURETHANE BASED, NON-SAG ELASTOMERIC SEALANT. CAN BE USED IN GREEN AND DAMP CONCRETE APPLICATIONS.

MEETS FEDERAL SPEC TT-S-00230C, TYPE 11, CLASS A, MEETS ASTM C-920, TYPE S, GRADE NS, CLASS 35, USE T, NT, O, M, G, I, A.

## REDGARD WATERPROOFER

1G REDGARD ELASTOMERIC WATERPROOFER  
 LQWAF3 1018677174

- For stone and tile installation
- 1-coat crack protection
- 2-coat waterproofing
- Dries quickly
- Covers up to 350 SF



## RAINBUSTER CAULKING

12 OZ LDRB500 GRAY CAULK GRAY 3388050125  
 12 OZ LDRB500 GRAY CAULK GRAY (24) 338805012C  
 12 OZ LDRB500W WHITE CAULK WHT 3388050135  
 LDRB500W WHITE CAULK WHT (24) 3388050135  
 12 OZ TOP900WHT WHITE CAULK WHT 3388090129  
 TOP900WHTC WHITE CAULK WHT (24) 338809012C



## RAM BOARD PRODUCTS

38" x 100' ROLL FLOOR PROTECTION  
 RAM38100 46 RB 38-100

- Utilizes flex-fiber technology
- Added protection against water, paint, mud & more

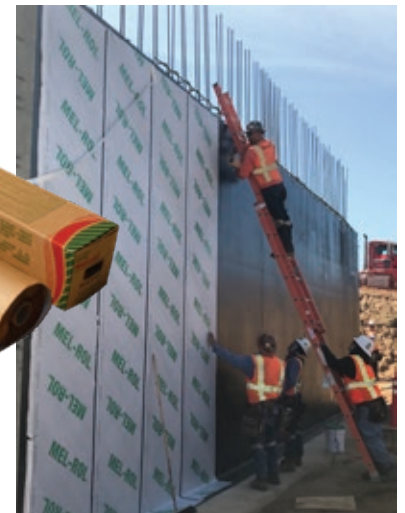
2.83" x 164' SEAM TAPE  
 RAMTAPE RBST 3-164

- Kraft paper backing



## MEL-ROL WATERPROOFING MEMBRANE

38.5" x 62.5"  
 32000295



## PERFORATED PIPE

4" x 20' SCH40 PERFORATED PIPE  
5482600857 C19AZI



## DRAIN SLEEVE

4" x 100' S&D DRAIN SLEEVE  
0218204100 04100-10



## FIBERGLASS STEP LADDERS

TYPE II 4' 2886508731 FS4004  
TYPE 1A 4' 2886520010 FS1504  
TWIN - TYPE1A 6' 5175101164 T6206



## EXTENSION LADDERS

ALUM TYPE I 16' 5175101215 D1316-2  
FBRGLS TYPE 1A 20' 5175101900 D6220-2  
FBRGLS TYPE 1A 16' 5175101909 D6216-2  
FBRGLS TYPE 1A 24' 5175101911 D6224-2  
FBRGLS TYPE 1A 28' 5175101913 D6228-2

## BUCKETS

5 GAL RED PLASTIC BUCKET 05050 BUCKET3  
5 GAL PLASTIC BUCKET LID 05050 BUCKETLID



The No Bull Solution  
For Construction  
Site Management

**SPILL BULLY**  
Innovative & Eco-Friendly



▲ **Spill Kits**  
Eco-Friendly Absorbents



▲ **Stormwater**  
Sediment Control  
Erosion Management

▼ **Containment**  
Heavy Equipment  
Concrete/Paint Washout



## 2" TRASH PUMP

42001517 QP2TH  
• Dual 2" ports  
• 1" Max discharge diameter  
• Up to 211 gpm



## SUMP PUMPS

SUMP PUMP 1HP 73GPM (ST2037) 42001525 SUMP PUMP .25HP 33GPM (YELLSUB) 42001520  
SUMP PUMP 1HP 79GPM (ST2040T) 42001530 SUMP PUMP FLOAT SWITCH (SW1A) 42001555  
SUMP PUMP 1HP 87GPM (ST2047) 42001535



## GLOVES

DEMO GLOVE LG 48-22-8732 4524236695  
DEMO GLOVE XL 48-22-8733 4524236696  
DEMO GLOVE MD 48-22-8731 4524246976

<b>11 Convenient Locations To Serve You</b>	Anaheim	Buena Park	Corona	Costa Mesa	Laguna Beach
	1220 E. Ball Rd. Anaheim, CA (714) 772-5444	6586 Beach Blvd. Buena Park, CA (714) 522-2864	150 W. Blaine St. Corona, CA (951) 278-4000	1100 Bristol St. Costa Mesa, CA (714) 556-1500	1765 Laguna Cyn. Rd. Laguna Beach, CA (949) 494-6538
Lake Forest	Los Alamitos	Northridge	Pasadena	San Juan Capistrano	South Bay
23132 Orange Ave. Lake Forest, CA (949) 830-3600	10742 Los Alamitos Blvd. Los Alamitos, CA (562) 346-2100	18537 Parthenia St. Northridge, CA (818) 349-6701	3003 E. Colorado Blvd. Pasadena, CA (626) 993-2100	25865 Stonehill Dr. San Juan Capistrano, CA (949) 496-5765	2600 Del Amo Blvd. Torrance, CA (424) 350-3000

Connect With Us.



GanahlLumber.com

